

welcome

We are proud to present to you the new KatChef catalogue. This is a result of numerous hours of being on the floor with Chefs across countries -observing, discussing and capturing suggestions. We understand what drives and challenges Chefs in the kitchen.

The KatChef collection is designed and fabricated to maximise comfort, protection and style to suit all aspirations. The KatChef fabric team has newly introduced the high- end "European Comfortex Sateen" and "Comfortex Twill" fabrics. We have also launched the 100% wrinkle free pant, another first, to enter the chef's line. It is important for the Chef to stay dry and cool, so we have introduced a back vent jacket. This has a mesh panel at the back for greater moisture management. For the budding chefs, we have the denim cut pant (*Style 201221 featured on page 12*) that combines style and utility with ease. The exclusive made to order linen jacket, is available on demand, for the Cordon bleu.

KatChef has an eco-friendly product range, fully endorsing the go green initiative. The Company has been a front runner in offering garments made out of 100% organic cotton and recycled poly fabrics. The entire manufacturing process of our clothes-line meets global standards.

We, at KatChef, look forward to a future of unparalleled innovation in the culinary world and will always strive to delight our customers. Do visit us at www.katchef.com or write to us. We will be happy to meet you.

Team KatChef



TABLE OF CONTENTS

	Chef Coats.....	4
	Pants Collection.....	11
	Accessories	
	Apron Collection.....	15
	Headwear & Neckwear.....	16
	Shirts & T-shirts.....	17
	Wash Care Instruction.....	18
	Measurements & Sizes.....	19
	How to Order.....	19



All products also
available in 100%
organic cotton



Chef Coats





A | Available in Black and White



B | Available in White and Natural



Frank Zeigler, Executive Chef, Lebuva, New Delhi
Frank is wearing coat style 4112

C | Available in White and Black

A | STYLE 3011

- 230gsm proflex stretch* polycot with anti-pill finish
- Double breasted with 6 mushroom buttons
- Short sleeves
- Under arm vent, back vent

* Comfort stretch yarn which withstands high industrial laundry temperature

* Proflex stretch PC constitute 65% polyester, 33% cotton and 2% stretch yarn

B | STYLE 4010

- 180-225 gsm cotton linen
- Double breast with fabric button with long loop
- Short sleeves
- Under arm vent

C | STYLE 4112

- 250 gsm comfortex twill with anti-pill finish
- Double breasted with mushroom/cotton/nylon button
- Shirt sleeves style with cuffs
- Under arm vent, back vent



D | Available in White



E | Available in Black and White



F | Available in Black, White, Orange, Red and Blue



G | Available in Black and White

D | STYLE 2360

- 225-245-270 gsm, poly cot twill 65/35
- With ball buttons/mushroom button (black/white)
- Standup collar, long sleeves foldable
- Breast pocket, knife plus thermometer pocket on left sleeves
- Under arm vent, back vent

E | STYLE 2586

- 225-245-270-310 gsm, poly cot twill 65/35
- Double breasted with hidden button
- Piping in collar
- Under arm vent, back vent

F | STYLE 2662

- 225-245-270 gsm, poly cot twill 65/35
- Double breasted with hidden button
- Hidden breast pocket
- Thermometer pocket on left sleeves
- Under arm vent, back vent

G | STYLE 2441

- 225-245-270-310 gsm poly cot twill 65/35
- Double breasted with mushroom/nylon buttons with piping in collar and breast pocket
- 3 mm Polyester piping with contrast colour
- Rounded cuff
- Under arm vent, back vent



H | Available in Black



I | Available in Black, White, Orange, Red and Blue



Alice Helme from Green House at Olive, New Delhi
Alice is wearing coat style 3213

J | Available in Black, White, Orange, Red and Blue

H | STYLE 3763

- 210-225 gsm 65-35 polycotton twill
- Back half panel out of nylon net to match the jacket for ventilation
- Stitched double breasted
- Underarm vent

I | STYLE 2021

- 250gsm 65-35 polycot twill with anti-pill finish
- Double breasted with 5 buttons with nylon/mushroom/designer buttons
- Rounded cuff
- Under arm vent, back vent

J | STYLE 3213

- 245 gsm poly cot twill 65/35
- Double breast with pocket
- Contrast colour collar and button
- Short sleeves
- Under arm vent



K | Available in Black and White



L | Available in Black and White



M | Available in White



N | Available in Black and White

K | STYLE 2981

- 230gsm 65-35 polycot twill with anti-pill finish
- 3/4 Sleeves and side pockets
- V-Neck with no buttons
- Under arm vent, back vent

L | STYLE 2586

- 210-225 gsm 65-35 polycotton twill
- Stitched double breasted but worn like a tee shirt
- Short sleeves
- Underarm vent

M | STYLE 2793

- 210-240gsm Egyptian cotton with anti-pill finish
- Double breasted with fabric button
- Rounded cuffs
- Under arm vent

N | STYLE 2112

- 230gsm super soft comfotex cotton sateen
- Double breasted with nylon/mushroom/designer buttons
- Under arm vent, back vent



O | STYLE 3652

- 225-245-270-310 gsm poly cot twill 65/3
- Double breast with contrast button, collar with contrast centre piping
- 3/4 sleeves with button to hold fold
- Under arm vent



Button to hold fold

O | Available in Black, White, Orange, Red and Blue

P | STYLE 3581

- 225-245 gsm poly cot twill 65/35
- Double breast with contrast colour piping in neck, sleeves and front panel
- Rounded cuff
- Under arm vent



P | Available in Black, White, Orange, Red and Blue

Q | STYLE 3443

- 225-245 gsm poly cot twill 65/35
- Double breast with contrast colour in collar, front lapel and sleeves
- Rounded cuff
- Under arm vent



Contrast colour in collar, front lapel

Q | Available in Black, White, Orange, Red and Blue



Vaibhav Bhargav from Olive Bar & Kitchen New Delhi
Vaibhav is wearing coat style 2441



R | Available in Black, White, Orange, Red and Blue



S | Available in Black and White



T | Available in Black and White



U | Available in White

R | STYLE 2821

- 250gsm 65-35 polycot twill with anti-pill finish
- Double breasted with hidden button, except collar button which is visible
- Rounded cuff
- Under arm vent, back vent

S | STYLE 3925

- 225-245-270-310 gsm poly cot twill 65/35
- Style Traditional Classic with contrast colour piping
- Double breasted with mushroom/ cotton/ nylon buttons with 3 mm
- Polyester piping in collar and sides
- Standup collar
- Rounded cuff with piping on ends
- Under arm vent, back vent

T | STYLE 3991

- 225-245-270-310 gsm poly cot twill 65/35
- Double breasted, pocket with contrast colour stitch
- Rounded cuff
- Under arm vent

U | STYLE 3676

- 225-245-270-310 gsm poly cot twill 65/35
- Traditional Indian tri-colour on a Classic coat
- Double breasted with mushroom/ nylon buttons with piping in collar
- 3 mm Polyester piping
- Under arm vent, back vent

Pants Collection





PANTS



A | Shown in Black



B | Shown in Black

A | STYLE 201201

- 245 gsm 65/35 polycot
- Zipper fly
- Front and back pockets
- Belt loops

B | STYLE 201211

- 245 gsm 65/35 polycot twill
- 2" side elastic for flexibility of fit
- Zipper fly
- Front and Back pockets
- Belt loops
- Anti-pilling and resin finish



Black



Grey



Olive Green



Beige



Blue



C | Shown in Black



D | Shown in Black

C | STYLE 201221

- 2 Ply polycot 280 gsm styled like denim jeans
- Front pocket having an inner pocket on left side
- Side pocket for utility
- Back pockets
- Zipper fly
- Belt loops
- Anti-pilling and resin finish

D | STYLE 201231

- 245 gsm 65/35 poly cot
- Side adjustment buckle
- Pleated front
- Zipper fly
- Front and back pockets
- Belt loops
- Anti-pilling and resin finish

NEW



Inner elastic adjustment



E | Shown in Houndstooth Black



NEW

F | Shown in Black



G | Shown in Houndstooth Blue



Sabyasachi Gorai, Director of Kitchens, Olive, New Delhi
wearing pant style 201221

E | STYLE 201241

- 245 gsm 65/35 polycot twill
- With inner elastic adjustment
- Extra-deep front pockets
- Relaxed fit
- Anti-pilling and resin finish

F | 201251

- 270 gsm 100% cotton with wrinkle free finish
- Extra-deep front pockets
- Relaxed fit
- Anti-pilling and resin finish

G | STYLE 201261

- 250 gsm 65-35 polycot twill
- 2" elastic waistband with drawstring
- Extra-deep front pockets
- Relaxed fit
- Anti-pilling and resin finish



Black



Grey



Olive Green



Beige



Blue



Checks
(Blue on White)



Checks
(Black on White)



Stripes
(Black & White)



Stripes
(Blue & White)

Accessories



APRON MATRIX



White



Black



Apricot



Light Red



Pink



Red



Bordeaux



Orange



Yellow



Apple



Green



Turquoise



Light Blue



Purple



Cobalt Blue



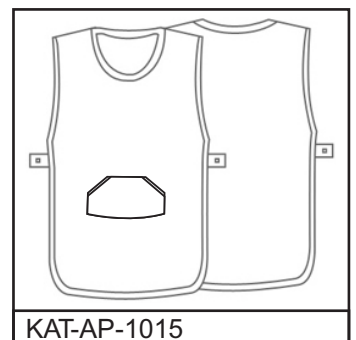
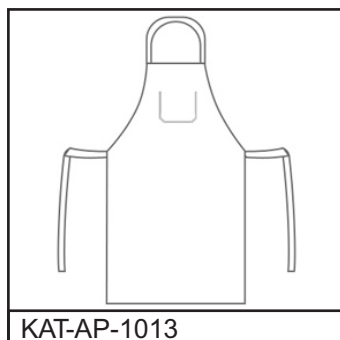
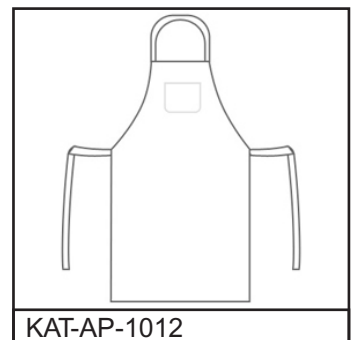
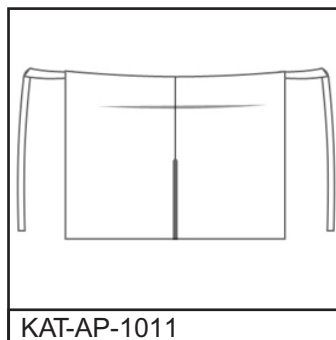
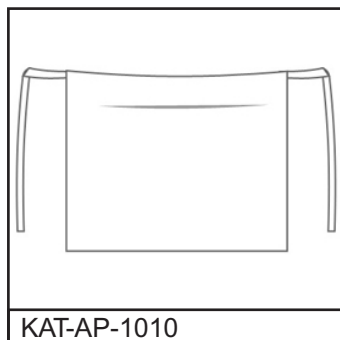
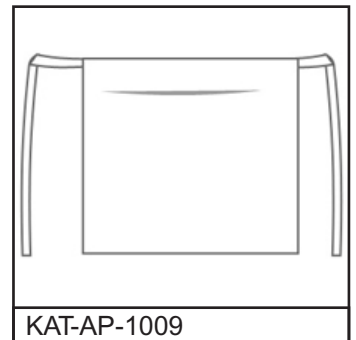
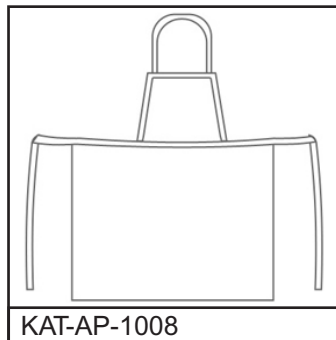
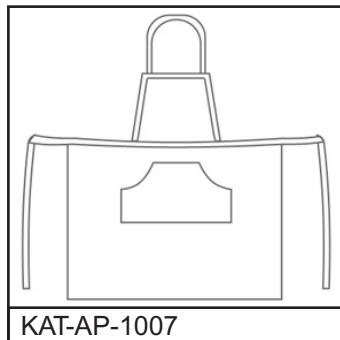
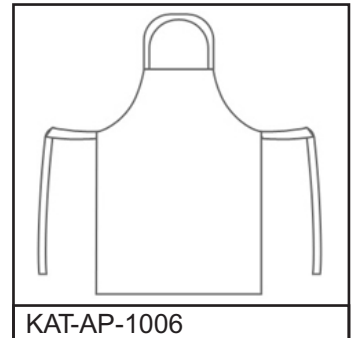
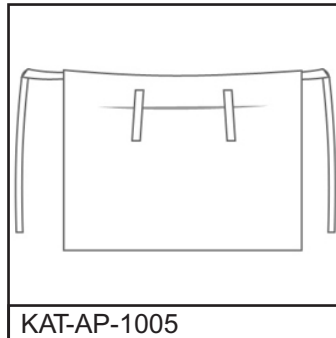
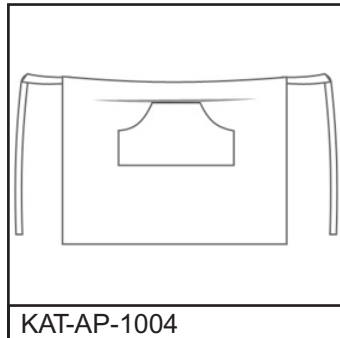
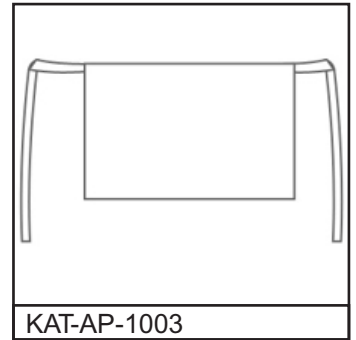
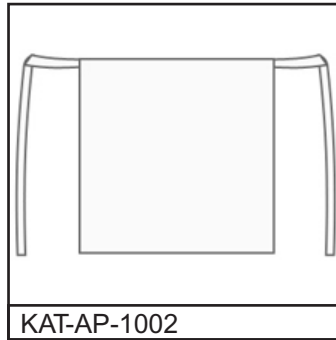
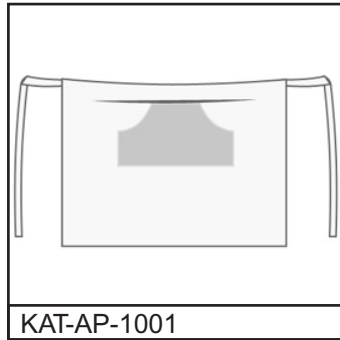
Grey



Navy



Brown



- 180-210 gsm, 65/35 polycot; 100% polyester
- Stain-resistance in polyester fabric
- For cuts, ties, sizes and pockets refer apron matrix above



SKULL CAP

- 210 gsm 65/ 35 polycot; 100% cotton
- With/ without Elastic band in back



SKULL CAP

- 210 gsm 65/ 35 polycot; 100% cotton
- With/ without Elastic band in back
- Triangular cut in back



MESH SKULL CAP

- Mesh top for superior ventilation
- 100% polyester mesh



TOQUE HAT

- 65 poly/ 35 cotton fabric blend
- An elastic band at the back for an adjustable comfort fit



CHEF BAND

- It's a bandanna, it's a headwrap, it's both
- Lightweight 100% cotton; polyester
- Elastic back for a snug fit



CHEF WRAP

- 210 gsm 100% cotton/polyester/ polycot
- Bandanna-like design
- Fully adjustable ties



KERCHIEF BANDANNA

- 100% Cotton/polyester
- Ties in Back
- Perfect for Hot Kitchens
- Size : 65X65 cm



CHEF WRAP

- 210 gsm 100% cotton/polyester/ polycot
- Bandanna-like design
- Fully adjustable ties



POLOSHIRTS / T-SHIRTS

- Polyamide buttons
- Without breast pocket
- Reinforced shoulder
- Maximum shrinkage 3%
- Colourfast and boil-proof
- Suitable for industrial laundering



SHIRTS

- Available in polycot blend
- With/without stretch
- Full sleeve with one chest pocket



WASHCARE INSTRUCTION



Our product range consists largely of garments that are suitable for industrial laundering. All our products undergo stringent testing regarding durability, linting and pilling, shrinkage and colour fastness.

- Clothes must always be washed before use.
- Never wash white/ light-coloured and coloured garments together.
- Dark coloured garments should be washed separately.
- Remember to empty pockets before washing.
- Close zip fasteners and velcro fastenings.
- Never iron directly on prints - iron on the reverse side or cover with an ironing cloth.
- Use the correct amount of washing powder.
- Do not use fabric softener
- Do not use bleaching agents on coloured products.
- Do not use optical brighteners.

Before industrial laundering, appropriate washing tests have to be carried out. KatChef does not assume liability for complaints which are attributable to inadequate washing tests.

MEASUREMENT GUIDELINES

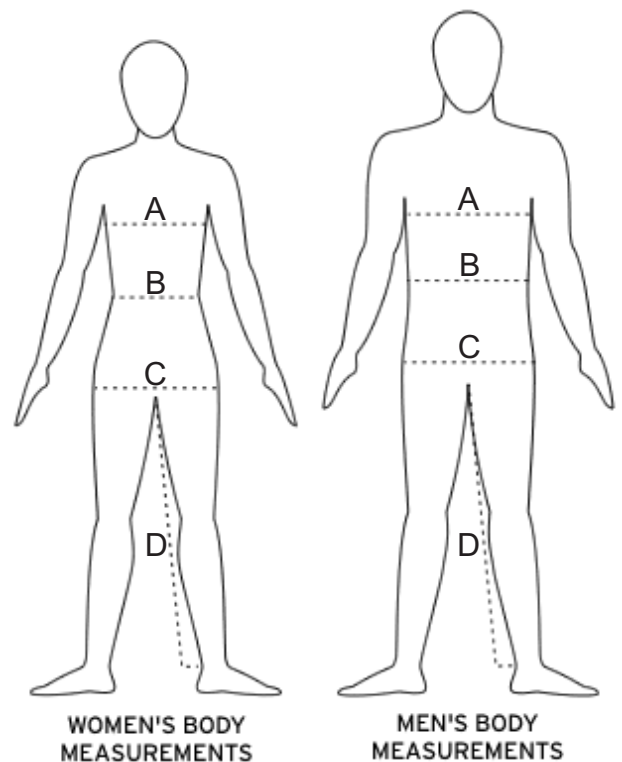


To get the best fit, stand straight and relax.

- CHEST:** Measure from the fullest part of the chest/bust with your arms down.
- WAIST:** Measure around your natural waistline above the hips.
- HIPS:** Measure around the fullest part of the hips.
- NECK:** Measure around the neck at the Adam's apple.
- INSEAM:** Measure from the base of the crotch to the bottom end of your pants. Or select a pair of pants that fits you well and measure along the inside leg seam from the crotch to the bottom of the hem.

The above measurement will help us find the perfect fit for you. The garment will be larger than the body measurements in order to provide for comfortable movement.

- A. CHEST
- B. WAIST
- C. HIPS
- D. INSEAM



HOW TO ORDER



We look forward to your getting in touch with us to place your orders at order@katchef.com

"In my mind KatChef is the only world class chef wear in India. It is also very hip and cool which suits the need of the gen-nex chefs of this diverse nation."



Sabyasachi Gorai,
Director of Kitchens, Olive,
New Delhi

Recipient of The National Tourism Award 2012 for
"The Best Chef of India", standalone restaurant,
conferred by the President of India

KATALYST Pte. Ltd.

Head Office: 1 Peace Center, Sophie Road, Singapore

Regd. Office- B-25 C, Gangotri Enclave, Alaknanda, New Delhi-110019, India

Corporate Office: 202, South Delhi House, 12 Zamrudpur Community Centre,
Kailash Colony, New Delhi-110048, India

Phone No.- +91 9811142026, 9311142026

www.katchef.com